



KLE ADVANCE

ENGINEERING | MINING | TECHNOLOGY | WATER

WE TAKE OURSELVES SERIOUSLY

OVERVIEW

K L E ADVANCE TRADING is a 100% Black owned closed corporation that was founded in 2010.

KLE is majority-owned by a Black woman (60%).

COMPLIANCE

Registration: 2010 / 057944 / 23
VAT: 4490284579

KLE Ogies Workshop
FAMA Centre, Shop 2
Van Riebeeck Street
Ogies

CONTACT

PHONE:
082 847 9391

EMAIL:
info@kleadvance.co.za

sales@kleadvance.co.za

DIRECTORS

Lerato Louw (60%)
Ebalang Louw (40%)

INCLUSIVE PROCUREMENT AND BROAD BASED IMPACT ESG STRATEGY

Support for and mentorship of other SMME's registered or affiliated with local business chambers

Support for initiatives that positively impact vulnerable persons / groups

WHO IS KLE ADVANCE



An Aurik ESD program candidate



nominated by MINOPEX

SOME CLIENTS WE HAVE SERVICED

Glencore Coal

All sites (GGV, Impunzi, Tweefontein, ATC)



Thungela

Zibulo Open Cast in Ogies and underground



Minopex

Phola Coal



South32 / SERITI

Klipspruit, Khutala, Ifaletu and Wolvekrans (Potable water supply, Rehabilitation, Discard handling and Topsoil management)

Other services KLE can provide include:

- High pressure desludging and deep cleaning
- Supply and maintenance of water pumps
- Design, supply, installation and maintenance of water storage systems
- Supply of certain consumables required in use of water for mining, industrial and commercial activities

KLE COMPETENCIES

Strength of partnerships 90%

Team size 50%

Equipment and expertise 90%

respect | integrity | honesty | simplicity | innovation | communication | accountability

A SPECIALIST AT SOLVING ONSITE EMERGENCIES



WATER | MINING PLANT | MINERAL PROCESSING | OTHER

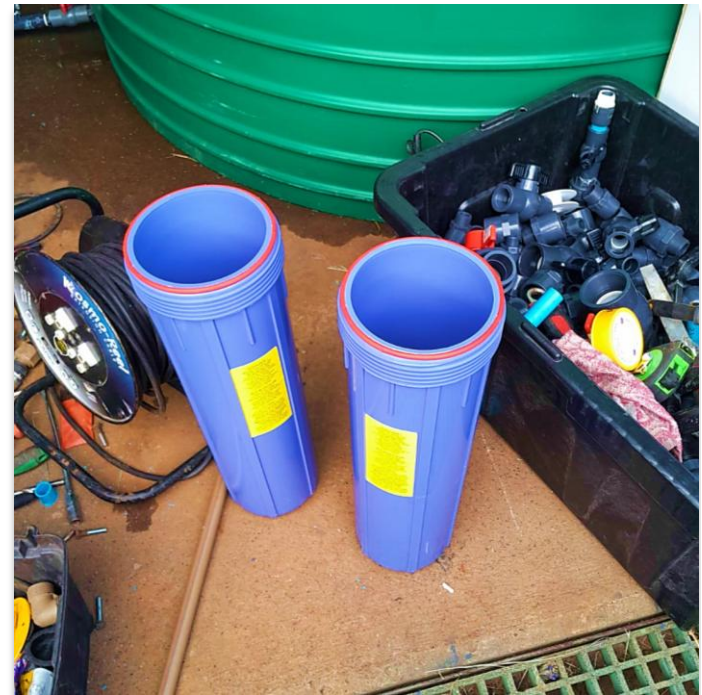
KLE is a partner that helps mining and industrial clients with emergencies.

AREA	TYPICAL EMERGENCY	MORE DETAILS
1) WATER	SUPPLIES NEEDED IN RESTRICTED AREAS OR HANDLING CHALLENGING DELIVERY CONDITIONS AND COMPLIANCE REQUIREMENTS	KLE HAS THE REQUISITE EQUIPMENT AND COMPLIANCE REQUIRED TO DELIVER RAW WATER AND POTABLE DRINKING WATER
2) PLANT	CRITICAL BREAKDOWNS, STANDBY SUPPORT AND SHUTDOWNS	REPLACE, FABRICATE OR FIX FAULTS TO RESTORE PRODUCTION QUICKLY
3) PROCESSING	QUALITY CHALLENGES	TROUBLESHOOT OR ENHANCE MACHINERY
4) OTHER	URGENT MINING SUPPLIES OR NEED FOR TECHNICAL CONSULTING FOR COMPLEX ONSITE ISSUES	WE DO SPECIALISED SOURCING INCLUDING FOR SHUTDOWNS. KLE HAS DEEP EXPERTISE

Our extensive experience in technical environments and our mine compliant team enables KLE to deliver to mining and industrial clients. KLE is a flexible and accommodative partner able to handle supporting emergency jobs requested by onsite client teams.

Contact KLE team for support with emergency orders: sales@kleadvance.co.za

KLE BULK WATER SUPPLY GALLERY: OUR MINE COMPLIANT PURIFIED AND POTABLE DRINKING WATER (SANS 241: 2015 COMPLIANT)



Overview of the two (2) services involved in an ESD partnership or supply chain relationship with KLE Advance

	Service(s)	Detail on item(s)	Some of key benefits	Recommendations on funding model or source of budget	Notes and considerations
	(The two (2) items below supplement each other for a cost neutral effect for our clients and have additional workstreams)	(our combined team has unique IP and expertise to ensure successful implement)	(not limited to items listed below)	(to support or appoint KLE Advance directly as a service provider)	(important additional items to take into consideration)
1.	<p>Bulk purified drinking water supply</p> <p>at all sites in terms of occupational hygiene (VOHE)</p> <ul style="list-style-type: none"> This includes design, installation and maintenance of water storage equipment / systems <p>by a majority (60%) black woman owned contractor with real experience in 24/7 handling of emergencies</p>	<ul style="list-style-type: none"> Support of KLE's business case enables the extension and growth of KLE's water processing workshop / plant Development of a black industrialist by empowering a fast-growing specialized water company in it's growth journey Support for KLE's business case will also enable the installation of equipment that is also able to handle, process and treat water impacted by acid mine drainage and other complex contaminants The framework for a significant multiplier effect exists in KLE 	<p>Successful partnership case study that has a relatively efficient support pivot needed to achieve success</p> <p>Creation of decent skilled to semi-skilled jobs as KLE's manufacturing and technical activity grows</p> <p>Collaboration with important host community partners for broader impact</p> <p>Mutual positive outcomes in positioning KLE as an important conduit for positive environmental impact and JUST Transition initiatives</p>	<p>Leveraging various SMME / EME support incentives e.g. ESD or provisions like NPAT and other tax offsets available</p> <p>Savings applicable through KLE's other secondary value-added technical services</p> <p>Potential cross-subsidization of KLE's bulk water services for an effective net positive to cost-neutral effect</p> <p>Existing budgeted spend for the category or commodity</p>	<p>Other instruments enabling KLE's delivery of services to partners include the following:</p> <ul style="list-style-type: none"> MEGA, IDP, municipal IDP frameworks ESD (enterprise and supplier development), BEE, SLP's (social and labour plans) and preferential procurement <p>KLE believes in creating meaningful partnerships this includes supporting:</p> <ul style="list-style-type: none"> Initiatives driven by key stakeholders in host communities that driving stability and growth within a region Initiatives that include preparing certain vulnerable persons and youth for the impact of the JUST transition by establishing support systems that are future fit Youth being employed through township tourism, certain disabled persons, orphans, elderly persons and child headed households that have been identified as important beneficiaries of broad-based efforts KLE supports.
2.	<p>Secondary value-added technical services</p> <p>Includes services that enhance and create efficiencies within plant and operations</p> <p>And supply of consumables related to handling of drinking water for - plant / engineering / opencast / underground</p>	<ul style="list-style-type: none"> Downstream benefits of a partnership with KLE include access to specialized high technical partnerships that KLE enjoys <p>Ensures the bulk purified drinking water services KLE aims to provide above on behalf of Human Capital or HR / Environmental team, OHS VOHE (occupational hygiene, health and safety) are - net positive / cost-neutral</p>	<p>Value-added services enable KLE to deliver an effective profile of either:</p> <ul style="list-style-type: none"> net positive cost-neutral <p>solutions in terms of bulk purified drinking water supply to personnel for occupational hygiene (VOHE)</p>	<p>Attractive and very efficient pay-out / pay-back profile applicable due to:</p> <ul style="list-style-type: none"> Reduced downtime Reduced mechanical failures Reduced penalties Increase in equipment lifespan Lower direct and indirect costs 	<p>The value-added services include (but not limited to):</p> <ul style="list-style-type: none"> Condition monitoring with Power BI Power factor correction <p>There is real history and expertise within KLE's technical partnerships in terms of a solid portfolio of evidence that the techniques above have been applied successfully</p> <p>KLE has a vision to keep expanding value-added services to enhance KLE's net positive effect and enable KLE to become self-sufficient through ESD support within the growth phase of KLE's business e.g. acquire a bottling plant and add technical laboratory services.</p>

Site visits that include a meeting at KLE Advance's premises in Ogies would also prove valuable in understanding KLE's potential and capabilities with regard to delivery of services.



KLE SUSTAINABLE ALTERNATIVE WATER SOLUTION

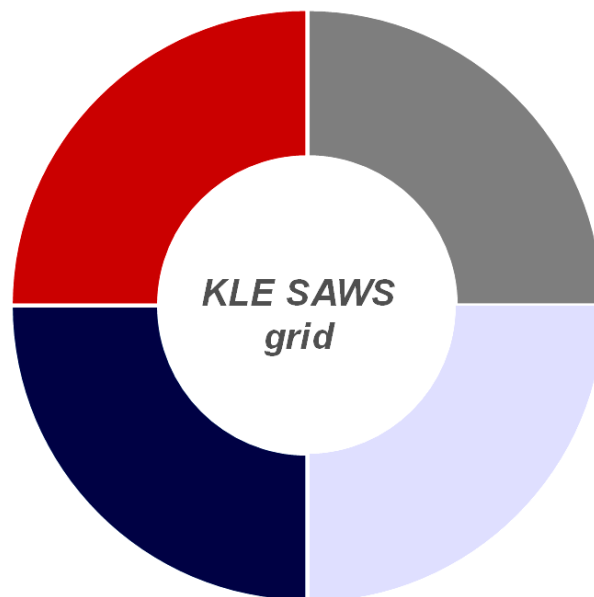
KLE aims to deliver enhancements in water treatment, handling, storage capacity and improvements in the reuse of water. KLE is confident it can offer a package that is world-class and of a superior nature. Below is an overview of the KLE SAWS system:

(1) Alternative water

- KLE technical partnership with German industry for the core module
- Grey water module
- Complex effluent control module e.g. Acid Mine Drainage (AMD)
- Water reuse capability module

(2) Systems

- Treatment and/or purification
- Flow control
- Storage
- Data collection and monitoring
- Consumables and engineering



(3) Applications

- Mining and plant e.g. production - washing and cooling
- Facilities – irrigation and sanitation
i.e. toilets, changerooms, showers, grass lawns, fauna and flora, garden ponds etc.

(4) Strategic issues

- Water use license efficiencies or optimization
- Ground water management and flooding control
- Aquifer recharge
- Brine waste

The KLE SAWS system aims to make a contribution that delivers enhancements in water balance and as such improvements in water use license compliance.

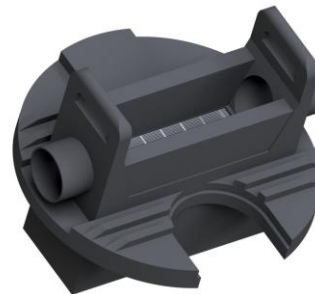
KLE AIMS FOR BETTER WATER BALANCE – GALLERY OF KLE SAWS SYSTEM

KLE SAWS system enables the removal of certain damaging debris or corrosive elements from alternative water sources so that equipment such as plant and machinery and other mining and industrial operations can utilize and reuse water from alternative water sources. The images below are examples of the components or parts of the KLE SAWS system:

Equipment and components to handle alternative water sources so that these alternatives water sources can



be converted into usable water within operations. This is how KLE enhances water use license compliance.



SPECIALISED SERVICES FOR PLANTS, ENGINEERING AND OPERATIONS – CONDITION MONITORING

KLE OFFERS CONDITION MONITORING – WHAT IS CONDITION MONITORING?

Condition monitoring is a data driven approach to maintenance that our team helps our clients use to achieve peak operational efficiency.

This data driven approach includes the use of thermography and ultrasound which are non-invasive techniques that involve using infrared imaging and other state-of-the-art equipment to detect and identify any variations, hot spots, leaks or anomalies that may be signs of impending failure of mechanical systems.

Condition monitoring detects and identifies issues before they become major problems, reducing downtime and minimizing repair costs. Comprehensive reports providing our clients information help our clients make informed decisions about maintenance and repairs.

Condition monitoring can also improve the safety of our clients' mechanical systems by identifying potential hazards early on, to enable action to be taken that protects employees, prevents accidents and other potentially catastrophic failures.

OUR IMPLEMENTATION PARTNERS



LIST OF TECHNIQUES:

- Infrared scanning
- Vibration analysis
- Oil analysis
- Ultrasound inspection
- Laser alignment
- Motor circuit analysis
- Lubrication and filtration
- Power BI

BENEFITS:

- Comprehensive diagnostics
- Real time insights
- Predictive analytics
- Remotely accessibility
- Tailored solutions
- Operational efficiency and reduced risk (through improvement of downtime and extending lifespan)
- Cost savings



OTHER SERVICES KLE ADVANCE OFFERS THAT IMPROVE PLANT AND OPERATIONAL RISKS:

Power factor correction (PFC) - involves enhancing efficiency in the configuration of electrical systems and circuits in a manner that lowers the load drawn. This means client systems will draw on less power from an electrical utility. This potential reduction through power factor correction can translate into significant cost savings.

Bulk Purified and Potable Drinking Water Supply for Occupational Hygiene, Health and Safety (VOHE) - this includes the maintenance of drinking water systems, installation of JoJo tanks for drinking water, drinking water refills and bulk bottled water supply that ensures personnel across operations are adequately hydrated and have access to compliant quality water.

WAY FORWARD:

We can tailor a pilot project with our specialists who include a fit-and-proper DMRE compliant statutory appointee in terms of:

Condition monitoring and power factor correction

- Focusing on critical equipment or high-risk assets / areas to demonstrate the effectiveness of the intervention on a smaller scale before expanding throughout the whole operation.

Bulk Supply of drinking water for Occupational Hygiene (VOHE)

- JoJo tank installations and drinking water refills at critical sites or the delivery of 500 ml bottled water to selected areas.

SPECIALISED SERVICES FOR PLANTS, ENGINEERING AND OPERATIONS – POWER FACTOR CORRECTION

KLE OFFERS POWER FACTOR CORRECTION - WHAT IS POWER FACTOR CORRECTION?

Power factor correction involves advanced techniques and tools to enhance the efficiency of electrical systems and circuits in a manner that lowers the load drawn. Techniques and tools include power quality monitoring, dynamic reactive compensation and variable speed drives. The reduction in load drawn from a source of power due to a revised configuration or system installation can translate into significant cost savings and valuable payback profiles.

OUR IMPLEMENTATION PARTNERS

Also enable our ability to support VSD's, softstarters, cabling, switchgear,, protection equipment, SCADA, MCC's, field boxes and various stations etc.



BENEFITS:

- Installations and configurations involve comprehensive diagnostics and analysis
- Real-time data and comprehensive reporting
- Immediate reduction in energy waste and increase in cost savings

OTHER SERVICES KLE ADVANCE OFFERS THAT IMPROVE PLANT AND OPERATIONAL RISKS:

Condition Monitoring (CM) - is a data driven approach to maintenance that our team helps our clients use to achieve peak operational efficiency. The potential reduction in breakdowns and increase in lifespan of equipment through operational efficiencies created can translate into significant cost savings.

Bulk Purified and Potable Drinking Water Supply for Occupational Hygiene, Health and Safety (VOHE) - this includes the maintenance of drinking water systems, installation of JoJo tanks for drinking water, drinking water refills and bulk bottled water supply that ensures personnel across operations are adequately hydrated and have access to compliant quality water.

WAY FORWARD:

We can tailor a pilot project with our specialists who include a fit-and-proper DMRE compliant statutory appointee in terms of:

Power factor correction and condition monitoring

- Focusing on critical equipment or high-risk assets / areas to demonstrate the effectiveness of the intervention on a smaller scale before expanding throughout the whole operation.

Bulk Supply of drinking water for Occupational Hygiene (VOHE)

- JoJo tank installations and drinking water refills at critical sites or the delivery of 500 ml bottled water to selected areas.