

# Adfresco® Café Barrier - Stainless Steel

Stylish, strong and effective – create the perfect space for your customers and brand



Showing lower cross rail and sliding ring tether option



Café Barriers win space and visibility

- Unique patented design with market leading features and benefits
- High quality **stainless steel** for optimum outdoor life and scratch resistance
- 13.5kg x 360mm diameter **base** provides excellent stability
- Lower **cross rail** for full Disability Discrimination Act (DDA) compliance or lower cost bungee fixings available

- Flat packed for easy storage and transport
- Easy to assemble. Spanner included with base/pole fixing set



**In stock**



#### Recyclable

Stainless steel poles and bases. Designed for easy 'end of life' recycling.

## Unique features of



### Top/clip

Sleek top designed for comfortable lifting, with quick-release cross rails



### Bottom Cross Rail

Optional rigid lower cross rail provides audible 'tap' for visually impaired (DDA compliant)

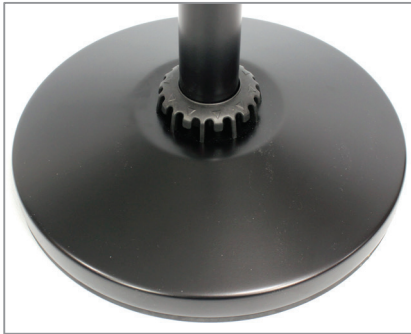


### Base

13.5kg rubber-edged base provides optimum stability, prevents damage to floors and gives option to roll rather than lift

# Adfresco® Café Barrier - Black

Alternative look, even greater value – our stylish Adfresco® Black



Showing bungee tether option in place of lower cross rail and sliding ring

- Black poles and bases with bungee tether option offers our lowest cost Adfresco® solution
- Choice of banner sizes and materials including a new 400gsm 'traditional' polyester canvas with full colour print at a market leading price
- Same unique market leading design
- Further details over the page

- Tough satin black pole and base for an alternative look
- Stainless steel cross rails



In stock



**Recyclable**

Steel poles and bases.  
Designed for easy 'end of life' recycling.

## Adfresco® Café Barrier:



### Sliding Ring

Unique patented 'smooth glide' ring allows banner to flex and eliminates wind damage associated with traditional designs



### Bungee Connector

Optional lower bungee connector holds banner taught – a cost effective alternative to a bottom cross rail



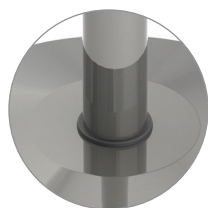
### Canvas Banner

Perfect for a stylish traditional look, this close-weave PU coated synthetic canvas will not stain or decay like cotton fabric and prints beautifully

# Adfresco® Café Barrier - Selection Tool

## 1

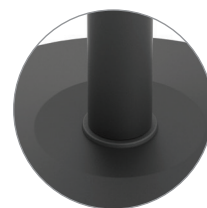
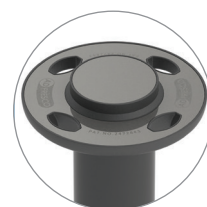
### Choose your Poles & Bases



**Stylish and strong stainless steel**  
- optimum outdoor life and scratch resistance

OR

**Classy and cost-effective satin black**  
- for a lower cost alternative look

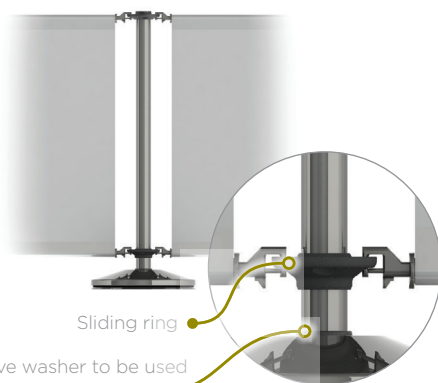


## 2

### Choose your Lower Tethering Method

#### Double cross-rail option

Provides strength, tautness and Disability Discrimination Act (DDA) compliance



Sliding ring

Protective washer to be used with sliding ring

OR

#### Single cross-rail and lower bungee option

Select the bungee pole connector and bungees instead of a second cross rail

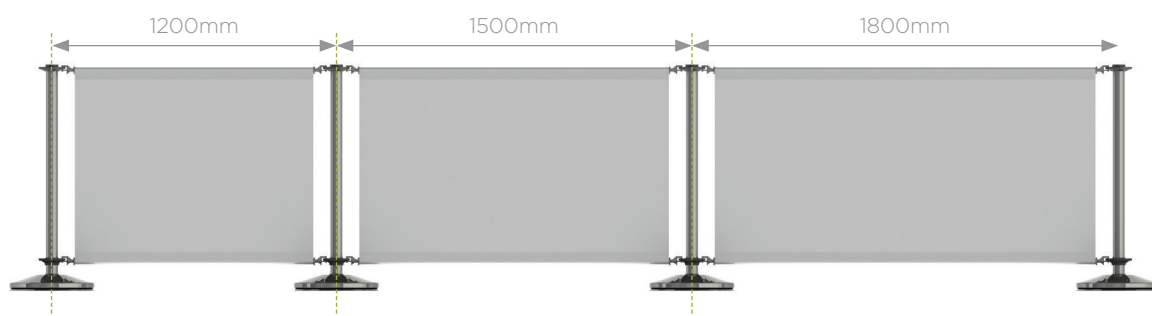


Bungee

Bungee connector

## 3

### Choose your Banner Width





Adfresco® allows you to individually select the elements to create your perfect Café Barrier - all with market-leading features and benefits.

# 4

## Choose your Banner Material

Choose from a wide selection of printed banners available in a choice of materials - all suitable for outdoor use!

### Light Block PVC 750gsm



Reinforced and totally opaque, this is perfect for double-sided print, long outdoor life and vibrant colour reproduction. The easy wipe-clean surface makes it ideal for front-of-house food and drink environments.

### Polyester Canvas 450gsm



This close-weave 100% polyester fabric has all the appearance, weight and feel of a traditional canvas yet, unlike cotton based canvases, it is cost effective and will not rot or stain. Available full colour printed to one side with the option of white or single colour on the reverse.

### Front-lit PVC 360gsm

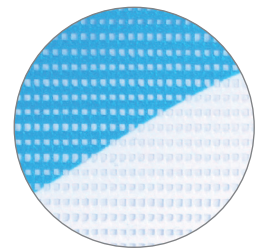
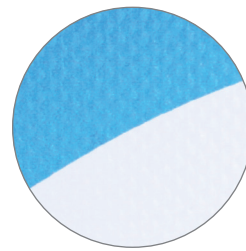
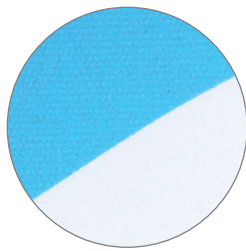
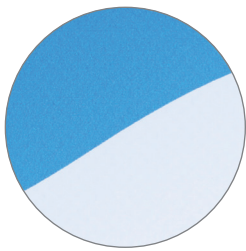


This material has woven reinforcement resulting in a slight surface texture. It provides a high quality print surface on one side with the option of white or single colour on the reverse, with vivid colour reproduction across the full spectrum.

### Mesh PVC 380gsm

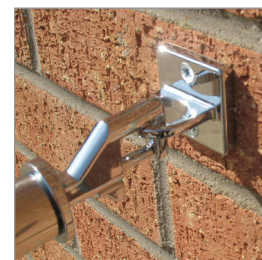


Provides a semi-transparent finish and allows some air to pass through making it ideal for windy locations, subtle branding, and creating a 'style-bar' look. Full colour print is available on one side (white on reverse).



All of our banners are suitable for outdoor use. To maintain best appearance, occasionally sponge down with warm soapy water. Use ratio: 30ml liquid soap / 10 litres water.

Item	Dimensions (mm)	Weight (kg)	Order Code
Stainless Steel Pole and Top Ring	Diameter: 113 (Pole Dia. 51mm) Height: 881	1.0	CBBPOLE-SS
Black Mild Steel Pole and Top Ring	Diameter: 113 (Pole Dia. 51mm) Height: 881	1.5	CBBPOLE-BLK
Stainless Steel Base	Diameter: 360 Height: 66	13.5	CBBBASE-SS
Black Base	Diameter: 360 Height: 66	13.5	CBBBASE-BLK
Cross Rail (width refers to distance between pole centres)	Width: 1200	0.8	CBBCLIP-2 + CBBCROSSBAR-2
	Width: 1500	1.1	CBBBAR15ØØ-2 + CBBCROSSBAR-2
	Width: 1800	1.2	CBBBAR18ØØ-2 + CBBCROSSBAR-2
Banner	1005 x 838	-	Please call for details
	1305 x 838	-	
	1605 x 838	-	
Sliding Ring	Diameter: 110 Height: 30	0.3	CBBRING
Bungee Pole Connector	Diameter: 94 Height: 26	0.1	CBBBUNGCON
Bungee	Overall length: 100	0.01	CBBBUNGEE
Eye Plate (for wall mounting)	40 x 40 x 35 (w x h x d)	0.06	CBBEYERING



Chrome plated 'Eye Plate' available for wall mounting (for cross rails only)



Use individually or link together for the ultimate brand presence