

# OCCS

# OZTURK CONSULTING & COMPLIANCE SERVICES

WWW.OZTURKCONSULTING.COM



Occupational Safety Solutions



Road Safety Solutions



Dangerous Goods  
Safety Advisory Services

# COMPANY OUTLINE

Ozturk Consulting and Compliance Services Ltd. (**OCCS**) is a full-service safety consulting company specialized in:

- General Health and Safety Consultancy
- Road and Traffic Safety
- Dangerous Goods Transportation Safety Advisory (DGSA)

Safe workplace...

Safe traffic...

Safe transportation...

# OCCS ROAD SAFETY SERVICES

### Coke and Sulphur Truck Route Modification Inspection

Due to the construction work initiated in the Gate B area, the changes in the routes of vehicles carrying coke and sulfur have been examined on the spot.

#### Findings

Some of the drivers continue to drive on the previous route, since sufficient information and guidance signs about the changing route are not located.





Photo 1 - Vehicle Entering the wrong (old) route

Photo 2 - Same vehicle exiting wrong route


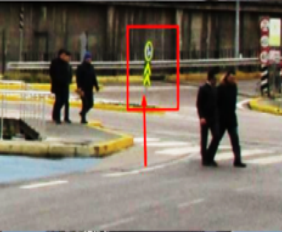

#### Recommended Traffic Layout

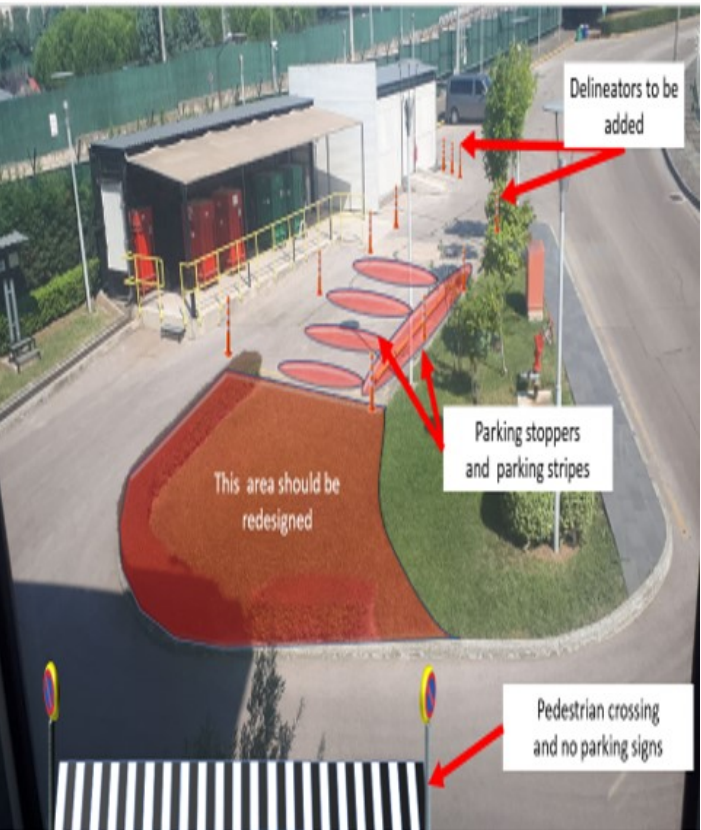
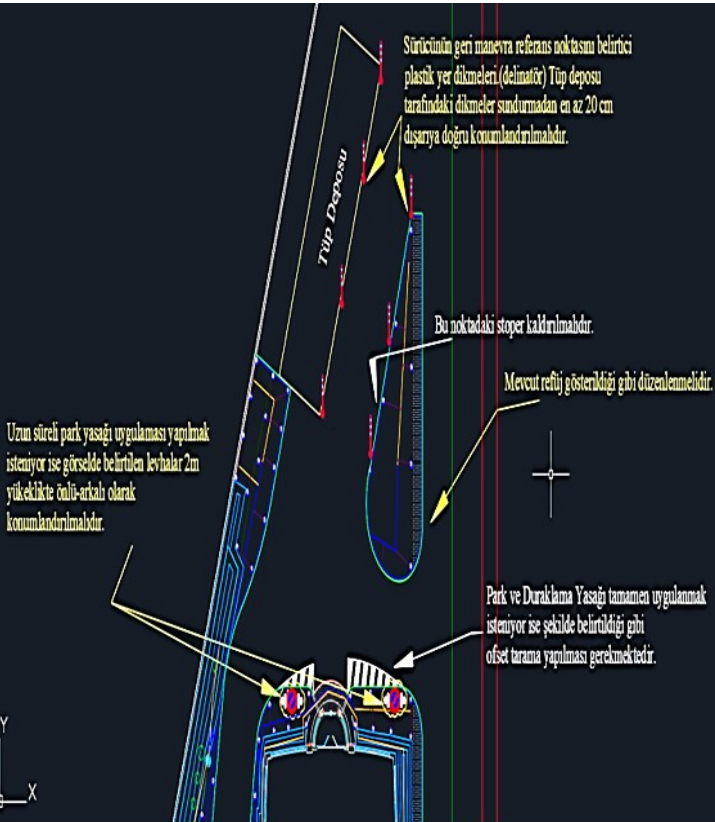
In order for the new route constructed due to the study to operate as desired, the guiding and informative signs must be placed in the correct locations:

1) For vehicles entering from Gate B security point, the TT-4 "Road Without Entrance" sign must be positioned on the photo and the TT35b "Left Direction Required" sign on the bottom part



Photo 3 - Traffic Signs Arrangement


REFINERY ROAD CONDITION AND TRAFFIC SURVEY	
Findings	Visual
1 There are deformations and deep potholes on the intersection road surface located before the A zone and the GM entrance gate. Drivers try to escape from these pits with sudden steering movements. As a result of this situation, collision with other road users, etc. risks occur.	
2 The median head and direction sign on the roundabout next to the A-zone entrance gate have been knocked over / dislocated for an unknown reason. Since the sign is located at the entry point and gives directional instructions at an important separation point, it is important to correct this sign asap.	
3 There are deformations and deep pits on the road surface at the entrance-exit point of the vehicle park temporarily created for zone B. Drivers entering the car park use the exit direction to escape from the potholes. As a result of this situation, dangerous vehicle encounters occur. At the same time, since fuel transportation vehicles use this point, passenger vehicles and heavy vehicles are faced during the full turn.	

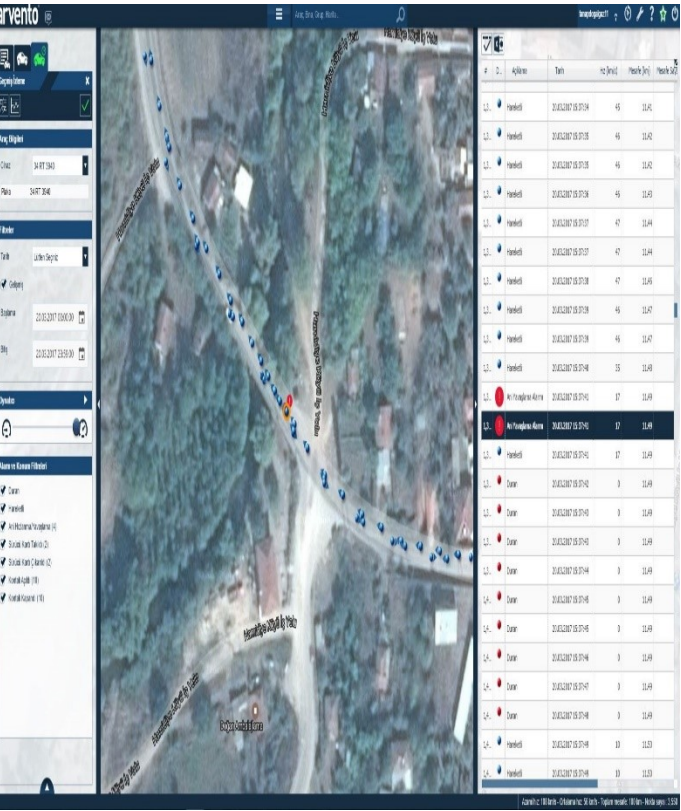


- Road safety audits
- Traffic safety plans
- Road risk assessments
- Traffic signage and road information signage consultation
- Management of traffic within a specific area
- Onsite parking safety
- Pedestrian walkway management
- Road safety management systems



# OCCS ROAD SAFETY SERVICES

Location/Site2,KP252 Railroad Crossing		Title: - RTA Train Accident	
Data base N##	51	Brief Description	On 21.03.17 as a train was traveling east bound from Erzurum towards Kars, approximately 300m west of railroad intersection the conductor noticed Mitsubishi L200 plate number 06 ABL 560 descending the hills from KP 252 ROW traveling south towards the Erzurum main highway and began to apply brakes as he realized the vehicle was not slowing down as it approached the intersection. At approximately 1710 when the Mitsubishi L200 approached the uncontrolled railroad crossing, it did not stop and subsequently it was contacted by the train and pushed approximately 20m before being pushed off of the north side of the tracks.
Date	21/03/2017 @ 17:10		
Event Type	Road Traffic Accident		
Golden Rules Breached	#10 Driving Safety – Drive Safely and comply with road transportation rules.	Immediate Actions	<p>The passenger and driver were transported to the hospital for assessment, and first aid treatment was provided to passenger's right hand and driver's left ear. Later they were both released to work without restriction. On this occasion injuries were minimal i.e. abrasions that did not bleed freely.</p> <p>It can be assumed that the injuries might have been more significant if not for the structural integrity of the truck cab working as designed, front and side curtain airbags deploying properly and both employees using the seat belts.</p>
		Root causes / Counter-measure	<p><b>Causes</b></p> <p>The driver did not follow road transportation rules and stop at railroad crossing prior to proceeding across tracks. Furthermore, driver was not situationally aware of his surroundings, i.e. unaware of train's presence, and did not yield to east bound train.</p> <p><b>Countermeasures:</b></p> <p>Toolbox talks required to discuss key learnings:</p> <ul style="list-style-type: none"><li>• Reinforce the need to follow and adhere to all road transportation rules and stop at railroad crossings.</li></ul> <p>Driver was dismissed from project due to blatant disregard for road transportation rules specifically addressing the multiple defiant behaviors of not stopping at the exact railroad crossing at KP252.</p> <p><b>Key Learning Message:</b></p> <ul style="list-style-type: none"><li>❑ Despite project RRAs being completed, tbt crossing bulletins for KP 252 being dispersed, and driver attending defensive driving, railroad crossing rules were not adhered too</li><li>❑ Road transportation rules shall be strictly adhered to at all times by all project drivers</li><li>❑ Drivers shall stop at all railroad crossings and look both ways to ensure tracks are clear of train prior to crossing tracks</li><li>❑ The technical problems of the IVMS service provider shall be solved via enforcement of TANAP and the regular reporting of Risk Poin Monitoring System shall continue to be implemented</li></ul> <p>If not for the front and side curtain airbags deploying as designed it is likely to assume injuries could have been more significant in this situation. Seats belts must be worn when operating any vehicle.</p>
Final position of vehicle after incident			



### SAFE DRIVING

1. Perform daily vehicle checks:

- Check your vehicle both visually and according to the checklist.
- Do not forget! Tire pressure should be suitable for the load you carry.
- Glasses should be clean and undamaged so as not to block the vision.
- Do not start the trip if your vehicle is not safe.

2. Plan your trip:

- Start the journey procedure.
- Collect information about the route, find out the weather condition, use a map, listen to the radio.
- Inform your line manager about the unexpected risks.

3. Check your documents:

- Your driving license.
- Vehicle documents
- Documents specific to the project (Safety and Driver Permit).
- People, that did not go through the training and receive a driver permit, cannot drive a project vehicle.

### Instructions for Pipeline Drivers

4. Journey:

- Everybody should fasten their seat belts.
- Passengers who are not authorized to ride on the vehicle should not be transported.
- Unsafe behavior of the passengers should be corrected and reported immediately.

5. Rest:

- 15 minutes after every 2 hours drive.
- Minimum 12 hours after a 12 hours full-shift.
- Take a break anytime if you feel tired.

6. To be seen and to be heard:

- The headlights should be on while driving, even in daylight.
- The horn should be used to warn, not to disturb.

7. Communication:

- Use your phone or wireless only when you are not driving.
- Do not make or answer calls while driving.

8. Distance:

- Keep your distance with other road users (2 Seconds Rule).
- Show respect to all passengers and other road users.

9. Speed:

- Always drive with a safe speed!
- Obey TANAP maximum speed limits (according to the Road Traffic Laws).
- TANAP does not pay traffic fines!

- Online economical and defensive driving courses for commercial drivers
- Accident root cause analysis and investigations
- Vehicle tracking systems consultancy (including driver behaviour improvement)
- Dash camera consultancy
- Journey management for long distances / lone workers
- Bespoke road safety awareness notifications and information materials

# ROAD SAFETY SOLUTION PARTNER



Safe workplace...  
Safe traffic...  
Safe transportation...

## Background

**OCCS** is run by Egemen Ozturk (Tech IOSH, MIIRSM) who has been working on the area of health and safety since 2005.

In 2009, Ozturk became Health - Safety and Road Safety Manager of Turkey's major bulk fuel transportation company which is also a transportation contractor of BP, Shell and Exxon Mobil with more than 150 trucks and 200 drivers.

By 2015, Ozturk started to work for Turkey's only road safety consultancy company and employed as Road Safety Coordinator for Trans Anatolian Gas Pipeline Construction project.

By 2018, Ozturk became the Road Safety Team Lead of Tüpraş Oil Refinery, which is Turkey's biggest oil refinery.

As of 2020, Ozturk moved to UK and set up **OCCS** to pursue his ambition for working on the area of road safety combined with occupational health and safety.

## Memberships:

- International Institute of Risk and Safety Management
- Institution of Occupational Safety and Health
- British Association of Dangerous Goods Professionals

# GET IN TOUCH

## WEB

[www.ozturkconsulting.com](http://www.ozturkconsulting.com)

## EMAIL

[egemen.ozturk@ozturkconsulting.com](mailto:egemen.ozturk@ozturkconsulting.com)

## PHONE

07765 479533

## ADDRESS

Church Square, Hartlepool