



THE GREENWICH YACHT CLUB


CONFERENCES

2018



We are delighted to introduce you to The Greenwich Yacht Club. GYC is London's hidden riverside gem located next to the O2. The Club has 2 stunning event spaces available for hire throughout the year for 20 to 200 guests making it the perfect venue for meetings, conferences, and corporate lunches.



A photograph of a wooden sailboat on a pebbly beach. The boat is in the foreground, angled towards the right. Its mast and rigging are visible. In the background, there is a modern, multi-story clubhouse with large windows and a tall, narrow chimney. The clubhouse is built on stilts over the water. The sky is blue with some clouds. The text is overlaid on the upper right portion of the image.

Greenwich Yacht Club was founded in 1908 by a group of Thames watermen and sailors. The first Clubhouse was situated on the beach adjacent to the current clubhouse in a large landed barge. In 1999 the Yacht Club moved to its current home on the ever changing peninsula and now boasts two fantastic venues...

...The Clubhouse, which sits on top of the Thames, has stunning panoramic river views taking in the Millennium Dome, the Thames Barrier and the Olympic Park.

The River Rooms are a purpose built event space also with wonderful views and an outside decking area making it the perfect setting for conferences.





THE GREENWICH YACHT CLUB

THE RIVER ROOMS

The River Rooms is our dedicated event space made up of 3 adjoining spaces.

- The main Hall
- The reception bar
- The outdoor decking

The rooms are hired as one and allow your event to flow seamlessly from one element to the next.

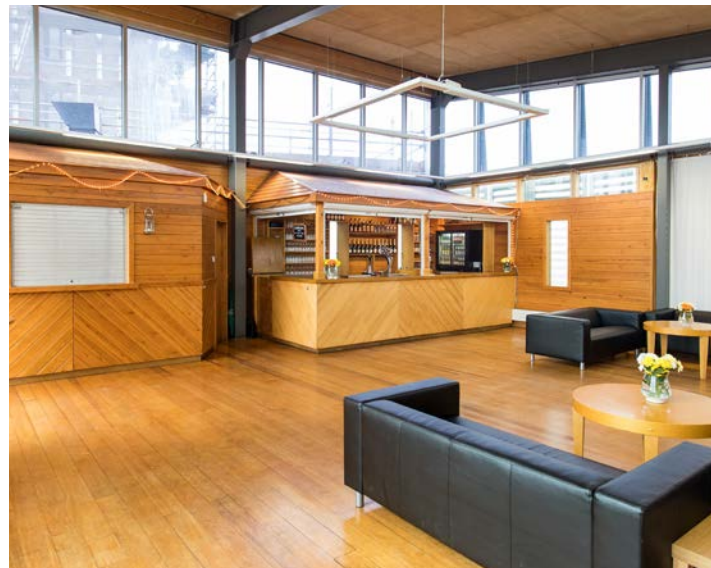
The sun terrace allows your guests to enjoy the weather when the sun decides to shine

The lounge bar gives everyone a place to relax and enjoy a drink whilst they mingle.

Our main hall is the perfect space for either meetings, conferences, corporate lunches and celebrations.



THE MAIN HALL



THE RECEPTION BAR



THE OUTDOOR DECKING



THE GREENWICH YACHT CLUB

THE RIVER ROOMS

THE RIVER ROOMS PACKAGE

- Exclusive use of the The River Rooms
- All tables and chairs
- 2 x A1 Flip charts
- Data projector and screen
- Microphone and PA
- Unlimited teas, coffees, biscuits, mineral water and fruit juice
- Cold finger buffet lunch (see catering page)
- Manager and Staff for service
- Free parking for up to 15 cars
- Cleaning
- Insurance

From £35 per person

Optional Extras:

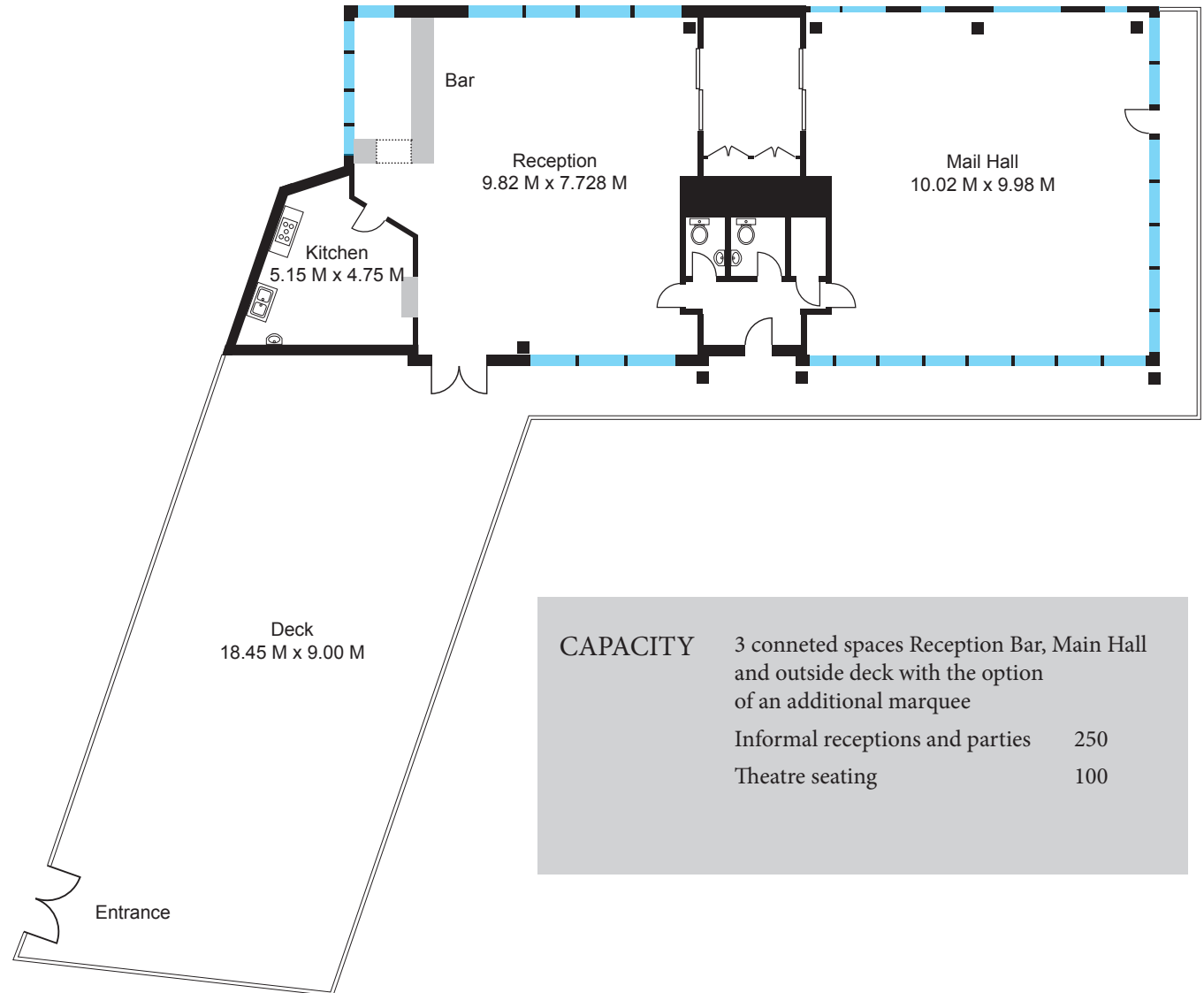
Hot finger bites £5 per person

Post conference drinks - £10 per person

(Unlimited beer, wine and softs for 1 hour)

Cost is based on a minimum number of 30 delegates full day conference.

All costs exclude VAT



CAPACITY

3 conneted spaces Reception Bar, Main Hall and outside deck with the option of an additional marquee

Informal receptions and parties 250

Theatre seating 100



THE GREENWICH YACHT CLUB

THE CLUBHOUSE

The Clubhouse, uniquely in London, is a building situated in the Thames. Guests can walk across the short bridge or arrive by boat on the private pontoon at the front of the building.

Once inside the first thing you will notice is the stunning panoramic views of the river and some of Londons Iconic landmarks. The O2 and cable car, The Thames Barrier and the Orbit tower in the Olympic park provide guests with the feeling that they are in the heart of modern London.

Concertina doors and a completely surrounding balcony means that guests can enjoy the river views to their hearts content.

Boating flags and nautical treasures adorn the ceiling and walls giving the hall a definite yachting theme and a breathtaking backdrop for your wedding.

The Clubhouse is our members bar and is therefore exclusively available on Fridays.





THE GREENWICH YACHT CLUB

THE CLUBHOUSE

THE CLUBHOUSE PACKAGE

- Exclusive use of the The Clubhouse
- All tables and chairs
- 2 x A1 Flip charts
- Data projector and screen
- Microphone and PA
- Unlimited teas, coffees, biscuits, mineral water and fruit juice
- Cold finger buffet lunch (see catering page)
- Manager and Staff for service
- Free parking for up to 15 cars
- Cleaning
- Insurance

From £35 per person

Optional Extras:

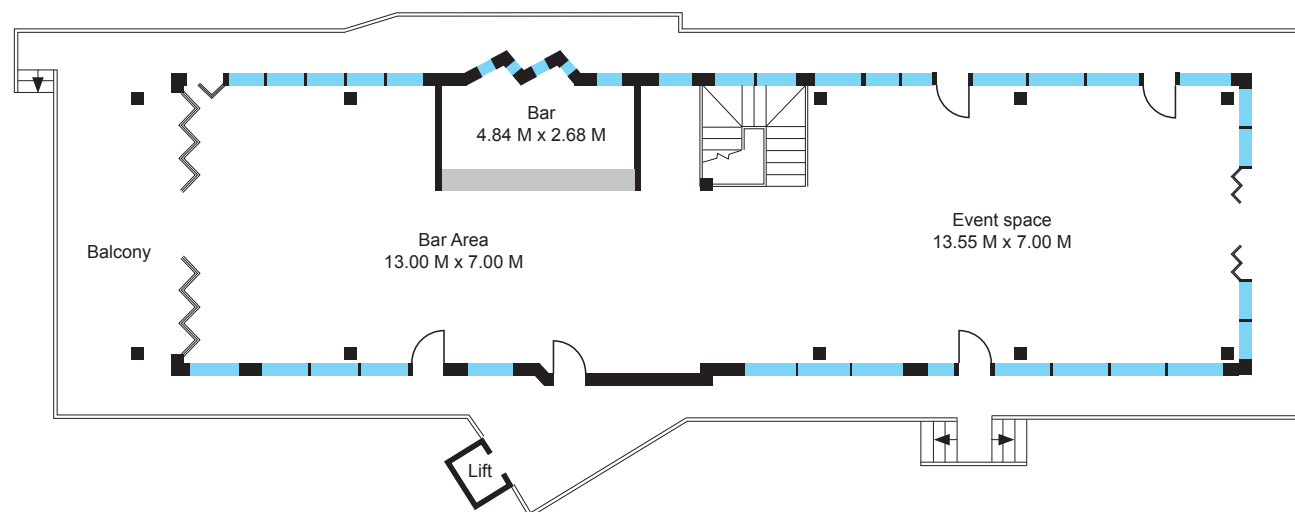
Hot finger bites £5 per person

Post conference drinks - £10 per person

(Unlimited beer, wine and softs for 1 hour)

Cost is based on a minimum number of 30 delegates full day conference.

All costs exclude VAT



CAPACITY	MAIN BAR	
	Theatre style seating	60
	Cabaret	36
	Informal receptions or networking	100
	COMMITTEE ROOM	14

A close-up photograph of a gourmet chocolate dessert. The dessert consists of a round, dark chocolate dome with a glossy finish, resting on a thick, golden-brown, textured base. The top of the dome is garnished with dark chocolate shavings and small, golden-brown crumbs. The dessert is presented on a light blue, textured plate. In the foreground, there is a decorative arrangement of dark chocolate shavings, small white cream dollops, and a fresh green mint leaf. The background shows a wooden table surface.

CATERING



THE GREENWICH YACHT CLUB

CATERING



WORKING LUNCH MENU

SANDWICHES

1.5 rounds of sandwiches per person from our sandwich selection menu all served with mixed leaf on artisan breads:

VEGETARIAN :

Brie and cranberry, egg mayonnaise and cress, cheddar with tomato chutney, humus and olive tapenade, mushroom and mozzarella,

MEAT :

Ham and English mustard, Ham and celeriac slaw, sausage and egg, roast chicken salad, pesto chicken, turkey and cranberry, roast beef and horseradish, chorizo and rocket

FISH :

Smoked salmon and cream cheese
Smoke mackerel with horseradish
Prawn lime and ginger
Poached honey glazed salmon

FINGER BUFFET

3 finger bites per person from the selection below.

VEGETARIAN:

Vegetable Samosa
Queen Olives - 4 per portion
Tapenade Bruschetta
Feta, Cherry Tomato & Basil Tart
Chickpea, Apricot & Ricotta Open Filo
Mini Pizza with mozzarella and pepperonata
Spinach Roulade
Chilli Cornbread Muffins

MEAT:

Chicken Brochette with Cinnamon and Paprika
Cocktail Sausages with Chutney - 3 per portion
chicken breast in bella lodi breadcrumbs with lemon & parsley mayonnaise dip

FISH:

Trout, Crème Fraiche & Pomegranate Tartlet
Salmon Brochette with Chilli & Ginger

DESSERTS (2 per person)

Chocolate brownie, carrot cake, blueberry muffin, vanilla cheesecake, apricot flapjack, apple turnover

Please note dietary requirements can be catered for and that all our menus are seasonal and subject to change.

HOW TO FIND US

ARRIVE IN STYLE

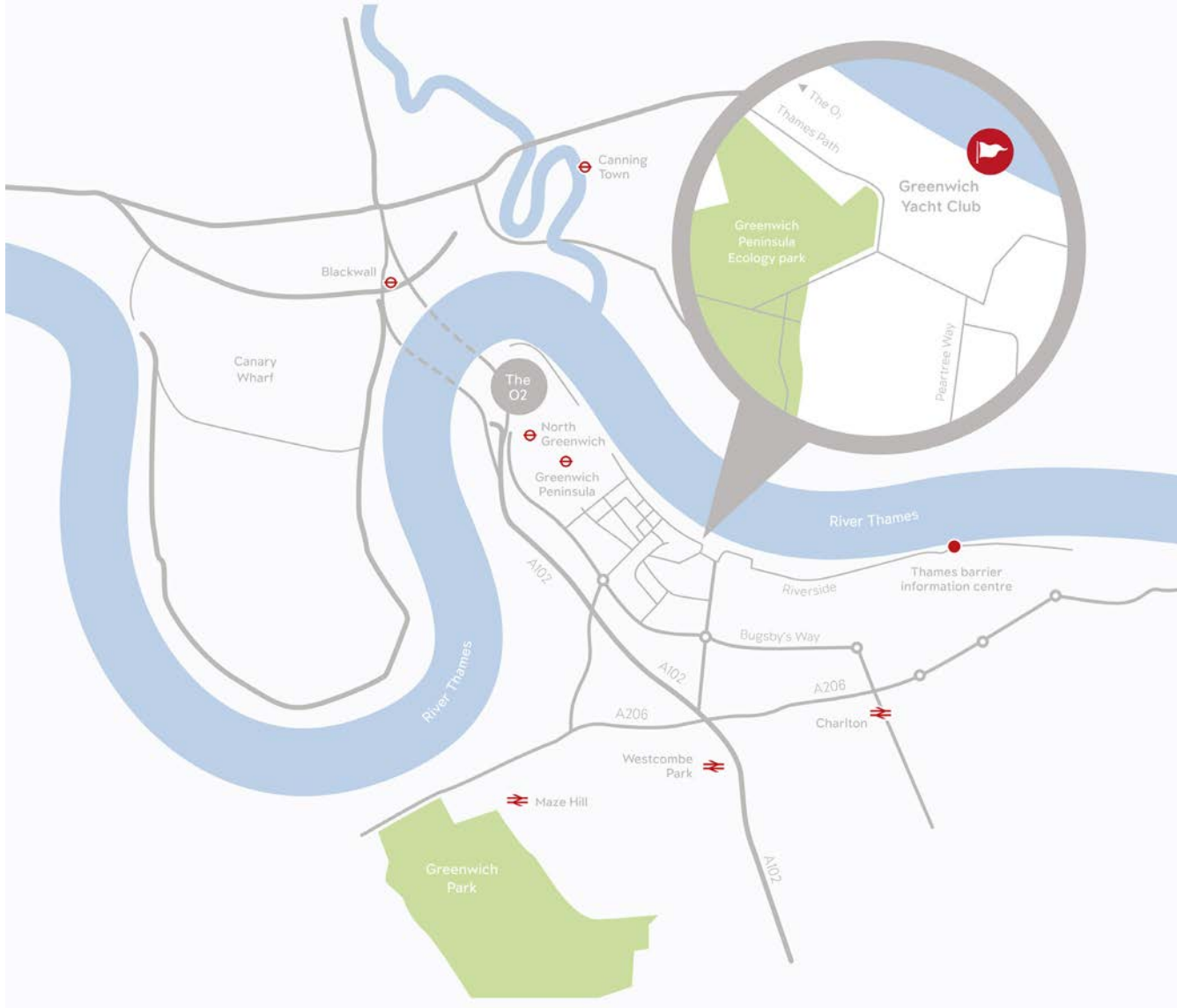
Greenwich Yacht Club also has its own private pontoon which can enable our guests to take a leisurely boat journey for up to 200 guests from the centre of London or Canary Wharf and arrive in style, relaxed for any event.





THE GREENWICH YACHT CLUB

HOW TO FIND US



Once you have had a look over this brochure please contact our events team to discuss the different options and packages.

EVENTS TEAM

Tel: (0)207 9522 410

EMAIL:

venuehire@greenwichyachtclub.co.uk

LOCATION

Greenwich Yacht Club

Pear Tree Wharf

1 Pear Tree Way

Greenwich

SE10 0BW

4 stops from London Bridge tube on the Jubilee Line