

How can I access Connexions?

- Are you a Blackpool resident?
- Aged 16-19 years?
- Are you not in education, employment or training?
- Do you feel you would benefit from a Personal Learning Advisor?
- Call into the Connexions Centre and speak to an advisor (you don't need an appointment).

We are open

Mon 9:30am - 5:00pm
Tues 10:00am - 5:00pm
Wed 9:30am - 5:00pm
Thurs 9:30am - 5:00pm
Fri 9:30am - 5:00pm

Connexions Blackpool T: (01253) 754840
2-8 Market Street
Blackpool, FY1 1ET **Facebook:**
Blackpool Council Connexions



Connecting you to your Future



Find us on facebook
Blackpool Council Connexions



To ensure services provided by Blackpool Council are accessible, information is available upon request in a variety of accessible formats including large print and Braille. We can also provide help for British Sign Language users and provide information in languages other than English.



Find us on facebook
Blackpool Council Connexions

connexions

Blackpool Council

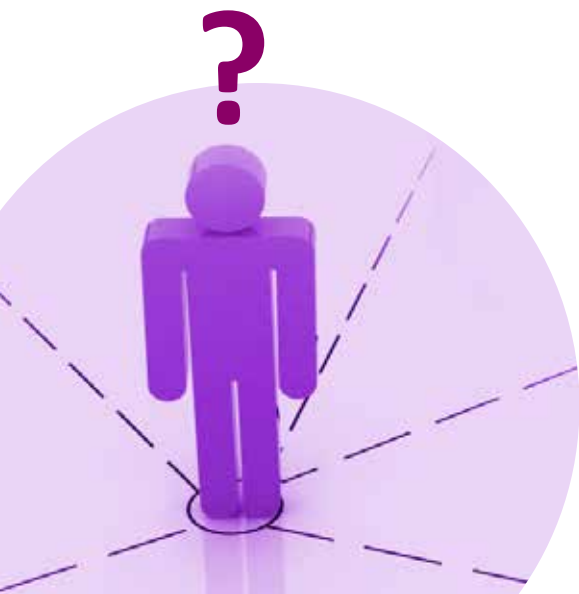
J106682 0713

What is Connexions?

Blackpool Connexions provides a service to all 16-19 year olds, up to 25 with learning disabilities, who are not in education, employment or training and who are Blackpool residents.

Your Personal Learning Advisors will help and support you to take necessary steps into education, employment and training.

We can support you and offer tailored information, advice and guidance around any barriers that are getting in the way of gaining education, employment or training.



What do Personal Learning Advisors do?

We aim to enable Blackpool young people to have a successful future.

We deliver independent and practical information, advice and guidance.

Your Advisor will work with you to assess your needs then plan your next steps.

You will have regular one-to-one meetings, if that is what you need.

We work closely with local & national employers, the National Apprenticeship Service, Job Centre Plus, College and local training providers.

We also offer personal development courses and have access to volunteering opportunities.

Your Personal Learning Advisor has a wide knowledge of other services that may support your journey into education, employment or training.

How can your Personal Learning Advisor help?

- Information, advice and guidance.
- Confidential one-to-one support.
- Personal careers advice.
- Employability support (CV building etc).
- Impartial, open and honest service.
- Ongoing help and support.
- Motivation and confidence building.
- Personal support, such as housing, benefits, etc.
- Skills and training.
- A wide range of opportunities.
- Information, help and support to access other services.

