

The logo features a blue curved line above the word "GLIDELINE". "GLIDE" is in black and "LINE" is in blue.

# GLIDELINE

A photograph of a wooden house with a gabled roof. Two skylights are visible: a triangular one on the left and a rectangular one on the right, both with grey frames. The house is made of horizontal wooden planks.

CASEMENT WINDOWS

# CASEMNET WINDOW

The Glideline Window is completely bespoke to the customer's specification and will be manufactured to the exact sizes provided. Our window is a sleek flat or flush casement system encompassing fixed or sash configurations.

## FLAT OR FLUSH

The Glideline Window features an industry-unique internal and external flat or flush casement. Sitting perfectly in line with the frame, its design ensures a timeless and elegant finish. With no bulky protruding profile, it means that all home styles or property types can benefit from this neat, simple and completely unique design.

Aluminium's innate strength allows for exceptionally slim sightlines without compromising on security. With as the edge of the frame being as close as 30mm from the glass, it means that less window and more light can be achieved.



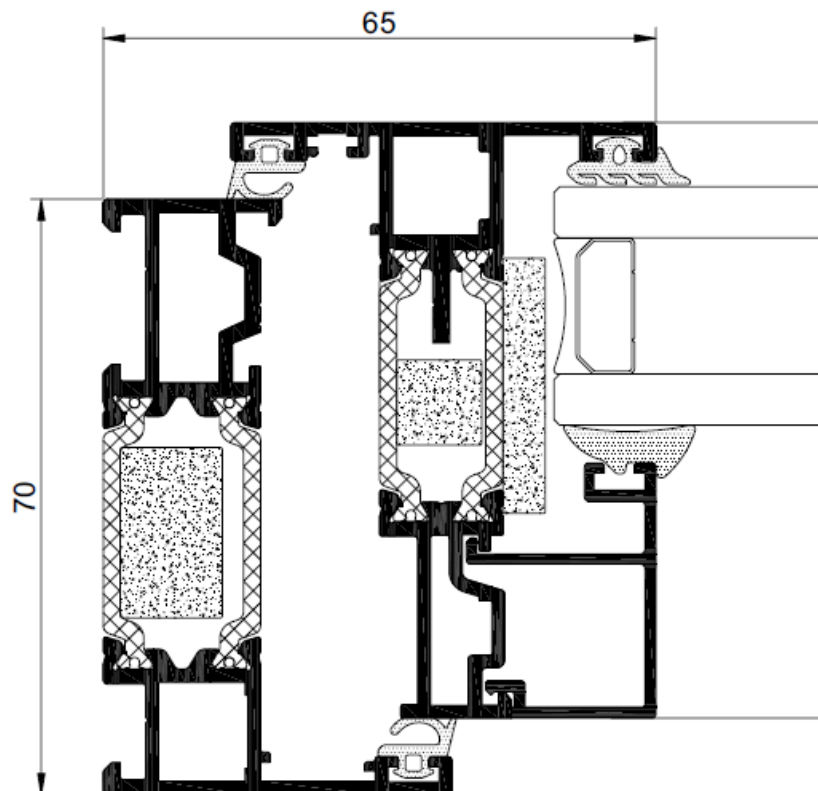
FLAT SASH



FLUSH SASH



JAMB DETAIL



## ENERGY EFFICIENCY

- $U_w$  from 1.0 (W/m<sup>2</sup>K)

## ACCOUSTIC INSULATION

- Maximum glazing: 44 mm
- Maximum acoustic insulation:  $R_w = 45$  dB

## ACHIEVED TEST CENTRE CLASS

- Air permeability (UNE-EN 12207:2000): Class 4
- Water tightness (UNE-EN 12208:2000): Class E1200
- Wind resistance (UNE-EN 12210:2000): Class CE2400

## FINISHES

- Colour powder coating (RAL, mottled, rough...)
- According to Qualicoat >60 micras
- According to Qualideco standard Anodized
- According to Ewwa Euras Standard
- Class 15 Optionally Class 20

## STANDARD COLOURS

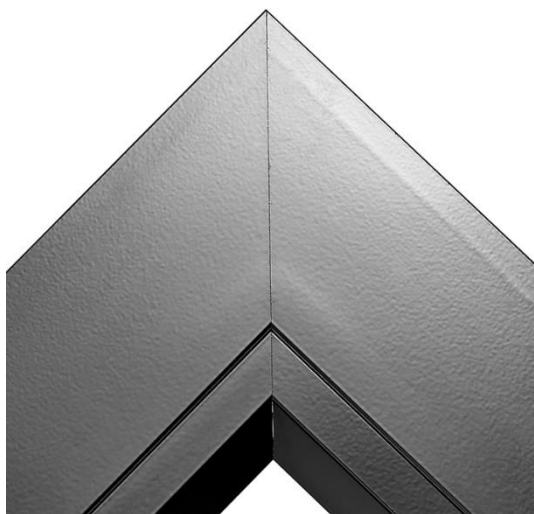
BLACK – MATT - 9005M



ANTHRACITE GREY – MATT - 7016M



BLACK – MATT - 9005M



## OPENING POSSIBILITIES

Open out, side hung or top hung or tilt and turn option

## FRAME DIMENTIONS

Depth = 70mm  
Profile thickness = 1.6mm

## MAXIMUM DIMENTIONS

Width = 700mm side hung, 1200mm top hung  
Height = 1300mm

## MAXIMUM WEIGHT

35kg side hung, 50kg top hung



ANTHRACITE GREY – MATT - 7016M

