



FLAT ROOF LIGHTS

GLIDELINE FLAT ROOF LIGHT

The Glideline roof light is the ideal product for bringing in light as well as style to residential & commercial properties. The clean lines offer a modern architectural finish that is ideal for both new-build and retro fit projects. The roof light has been designed to be a product that is simple & straight forward to install. It has simple slimline mitred cuts and mechanically cleated corners. Fully bonded glazing process offers impressive strength and high levels of thermal efficiency.



SPECIFICATION

- Thermally broken comprising of 2 x 27mm polyamide inserts
- Finished in a tough long-lasting polyester powder coated finish to RAL 7016
- 48mm overhang for a better weathertight seal
- Extruded frame to accommodate from 30mm DGU to 44mm DGU and Walk-On glass
- Glass from 1.0 U value to 0.6 U value
- Glass specification is subject to size
- Side fixed or lug fixed
- Standard RAL Colours available at additional cost
- Ritec self-cleaning glass available at an additional cost



Flush Finish



Frame U-Value
of 1.0 W/m²K



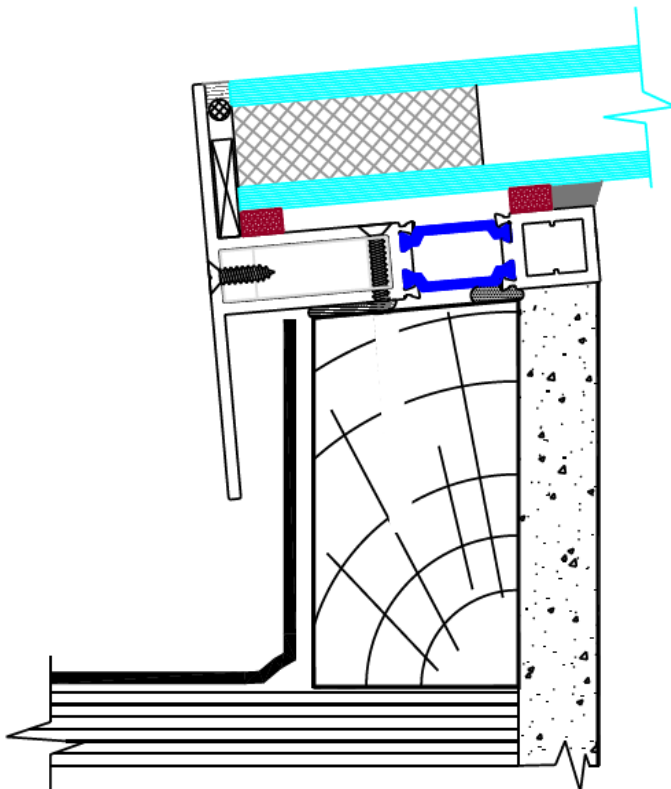
Double or triple
glazed units



Fits in any type of
building



Quick delivery
times



ROOF KERB

Your roof kerb should have a minimum of 150mm upstand from the lowest point and a 5-degree pitch. Usually 47mm timber is used.

- 150mm upstand
- 5-degree pitch
- 50mm wide
- Use insulated plasterboard

Always send Glideline your internal and external measurements so we can calculate your overhang which is 25mm all the way round.

If your kerb is wider than 50mm we can add additional width to the frame so it hides your plasterboard from above.

ENERGY EFFICIENCY

- Uw from 1.6 (W/m²K) (double glazed unit)
- Uw from 1.4 (W/m²K) (triple glazed unit)

ACCOUSTIC INSULATION

- Maximum glazing: 28 mm
- Maximum acoustic insulation: $R_w = 41$ dB.

ACHIEVED TEST CENTRE CLASS

- Air permeability (UNE-EN 12207:2000): Class 4
- Water tightness (UNE-EN 12208:2000): Class 7A
- Wind resistance (UNE-EN 12210:2000): Class C5

STANDARD COLOURS

BLACK – MATT - 9005M



ANTHRACITE GREY – MATT - 7016M



OPENING POSSIBILITIES

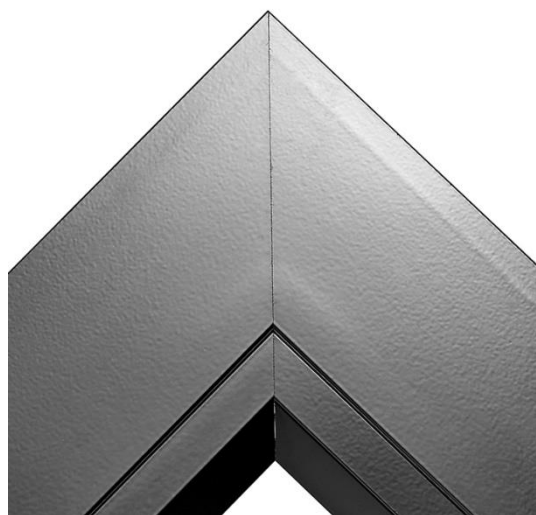
Fixed or motorized

FINISHES

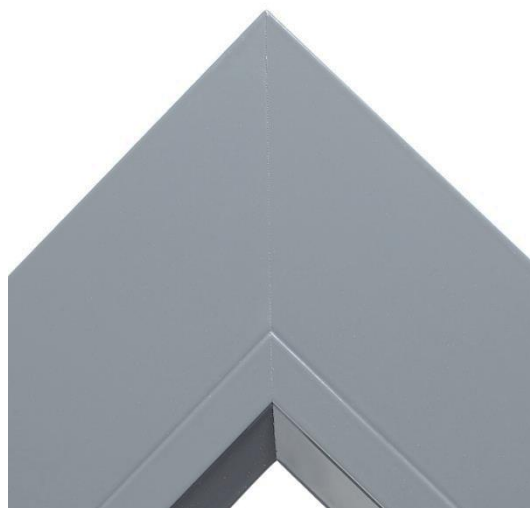
- Colour powder coating (RAL, mottled, rough...)
- According to Qualicoat >60 micras
- According to Qualideco standard Anodized
- According to Ewwa Euras Standard
- Class 15 Optionally Class 20



BLACK – MATT - 9005M



ANTHRACITE GREY – MATT - 7016M




GLIDELINE